

# ANTARCTICA DISCOVERY

A MODERN POLAR EXPERIENCE



JOIN THIS ADVENTUROUS VOYAGE  
TO THE 7<sup>TH</sup> CONTINENT ABOARD  
A BRAND NEW LUXURY SHIP

JANUARY 13, 2022 – JANUARY 24, 2022

PRE-TOUR: JANUARY 11, 2022 — JANUARY 14, 2022

POST-TOUR: JANUARY 24, 2022 — JANUARY 27, 2022

# ANTARCTICA DISCOVERY

Join us on an incredible journey through the vast beauty of the White Continent, featuring pristine polar wilderness, abundant wildlife, and spectacular scenery. The epitome of adventure, Antarctica is both a region in transformation—where effects of global climate change are noted—as well as a destination that transforms guests. Here in the remote, visitors find inspiration and perspective among elemental forces of ice, snow, water, and rock and become a part of the story of discovery.



Dear EXPLORERS and Friends,

Please join us for a once-in-a-lifetime adventure to experience the boundless beauty and pristine vastness of Antarctica. This remote continent and its precarious waterways have hosted some of the most courageous explorers in history, and have been the scenes of both triumph and tragedy since Captain Cook first sailed the region in 1773.

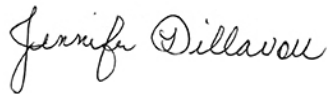
Embark from Ushuaia, Argentina, and cruise through the Drake Passage to the South Shetland Islands amid the Antarctic Peninsula—exploring the dramatic landscapes and remarkable wildlife that call this continent home. Trek through penguin rookeries, observe vast flocks of seabirds, learn about Antarctic ice conditions, and discover the sites of both past and present scientific expeditions.

Your expedition vessel for this amazing journey is the modern, 190-guest *Ocean Victory*, a nimble craft designed specifically for polar cruising—with large cabins, exceptional amenities, and a knowledgeable and friendly crew. Carefully selected specifically for this program, her small size provides the ability and agility to maneuver narrow channels and access bays that are closed to bigger vessels. The craft also boasts innovative new features including Rolls-Royce zero speed stabilizers and a patented X-Bow that offers a more comfortable and stable voyage.

This is a peak-season sailing for university and college alumni association travelers. With significant savings of more than \$800 per couple, we anticipate this program will fill quickly. Be certain to reserve your spot today.

Reserve online at [uillinois.orbridge.com](https://uillinois.orbridge.com), by calling (866) 639-0079 or by returning the enclosed reservation form.

Sincerely,

A handwritten signature in black ink that reads "Jennifer Dillavou". The signature is written in a cursive, flowing style.

Jennifer Dillavou  
President, University of Illinois Alumni Association  
<https://uiaa.org/explorers/>

*PS: Orbridge and University of Illinois EXPLORERS take your health and wellness seriously. Visit [orbridge.com/wellness](https://orbridge.com/wellness) to learn about our enhanced COVID-19 protocols.*

*Please note: The information contained in this document is current as of 3/22/2021*

## Program Highlights:

- Explore the South Shetland Islands and the Antarctic Peninsula, a beautiful island chain filled with an impressive variety of wildlife.
  - Cruise aboard the perfect vessel for exploration. *Ocean Victory* is an Ice Class 1A super (equivalent to Polar Class 6), featuring 83% staterooms with balconies and a unique X-Bow ship design. The inverted bow quickens the Drake Passage crossing as it slices through waves, reducing rolling by 80%—and helping to prevent possible seasickness. This proven technology produces very low levels of noise and vibration.
  - Enjoy the company and keen insights of expert expedition guides, scientists, and lecturers throughout the journey.
  - Explore at your own pace, with numerous passenger landings and discoveries throughout the voyage, aided by a nimble fleet of Zodiacs and knowledgeable guides.
  - Join the optional Sea Kayaking excursion (\$250 per person; limited availability). This is a one-time opportunity to explore the outstanding grandeur and magical beauty of the polar regions using a kayak. Participants must have prior kayaking experience.
  - Take advantage of the ship's impressive amenities, including a heated infinity swimming pool, two hot tubs, spa, gym, lounges, outdoor bar, and interactive dining experience.
  - **What's included:** 1 night luxury hotel accommodations (including breakfast) in Ushuaia prior to embarkation; 9 nights accommodations onboard *Ocean Victory*, including all onboard meals; 24-hour self-service coffee and tea facilities onboard; all scheduled landings and excursions (subject to weather and ice conditions); your own expedition parka to keep; a pair of insulated rubber boots for shore landings for the duration of the cruise (to be returned prior to disembarkation); access to a photographic trip log (shared with guests after the voyage via an online link); all ship-board gratuities; all luggage portorage; all port fees; transfers from the hotel to the ship on embarkation day; and group transfers for all guests arriving and departing during the suggested times.
-



## Itinerary:

### **Day 1: En Route from U.S.†**

Thursday, January 13, 2022

### **Day 2: Arrive Ushuaia, Argentina**

Friday, January 14, 2022

Welcome to Argentina, where you'll spend one night in the world's southernmost city before embarkation. Unwind in a privileged location within the Cerro Alarkén Natural Reserve and delight in stunning panoramic views of natural beauty. If time permits, explore nearby Arroyo Grande Meadows or the Rio Chico Waterfall.

*Overnight: Arakur Ushuaia Resort & Spa*

### **Day 3: Ushuaia – Embarkation**

Saturday, January 15, 2022

Explore Ushuaia or the nearby nature parks before joining the group transfer this afternoon to board the modern and luxurious vessel, *Ocean Victory*, for this expedition. Settle into your stateroom, and then get acquainted with fellow travelers as you sail through the Beagle Channel. Step out onto the viewing decks to embrace the passing scenery, and keep an eye out for immense icebergs, marine mammals, and birdlife. Albatrosses, petrels, and cormorants frequently speckle the magnificent vista. Gear up for fun and adventure to come by receiving jackets and boots with the group and enjoy sharing a welcome cocktail with the captain.

*Overnight: Ocean Victory (B,D)*

### **Days 4-5: Drake Passage**

Sunday, January 16, 2022 - Monday, January 17, 2022

Through today and tomorrow, sail south across the Drake Passage—named for 16th-century English privateer, Sir Francis Drake. This waterway marks the convergence of the Atlantic, Pacific, and Southern Oceans and is the latter's biological boundary. The Drake is populated with plankton, which promotes healthy populations of dolphins, whales, and seabirds, so be sure to have a quality pair of binoculars handy on the viewing decks. You'll likely spot many kinds of albatross (wandering, black-browed, and southern royal), along with varieties of petrel, shags, skuas, and gulls. Engage with fellow like-minded travelers while learning about Antarctica with informative lectures and safety briefings.

*Overnight: Ocean Victory (B,L,D daily)*

### **Days 6-9: South Shetland Islands / Antarctic Peninsula**

Tuesday, January 18, 2022 - Friday, January 21, 2022

Your experienced captain will seek the most opportune locations to spot marine life, dependent on weather and ice conditions. Longer daylight hours offer extended opportunities for wildlife viewing and Zodiac excursions. The water's cold environment is ideal for krill, whales, seals and a plethora of penguin colonies—from gentoo and chinstrap, to Adélie—who nest on land nearby. Glaciers and icebergs thousands of years old dot the landscape and provide an icy timeline of the area's history.

Throughout the voyage, you also may see evidence of past and present polar exploration and scientific expeditions, including modern stations operated by several nations. Some 30 different countries operate research stations around the continent, and these are inhabited more during the summer months than during the long and tough winters. Learn about the explorers, along with the challenges and the victories that make their stories so fascinating.

Deception Island, located at the northernmost point of the South Shetland Islands, has an other-worldly landscape of dark volcanic sand and imposing cliffs. Its center is the flooded caldera of an active volcano that severely damaged research stations in 1967 and 1969. Remains of abandoned whaling buildings and tanks still can be seen. The island is also home to thousands of chinstrap penguins.

Daily excursions ashore with the ship's expedition team and scientists provide the opportunity to explore the dramatic polar scenery—millennia-old ice shelves, sheer cliff faces, and permanent snow cover. Experience the adrenaline and awe inspired by the sheer beauty and power of this magical, yet harsh, continent.

Optional sea kayaking choices, plus a variety of other activities, provide opportunities to discover all that this remarkable area has to offer at a pace you choose. For the ultra-adventurous, brave the frigid waters during an optional polar plunge—a true rite of passage and a bucket-list item for any Antarctic expedition.

At each day's end, perhaps enjoy a drink in the lounge with fellow guests before adjourning to the ship's dining room for a hearty and delicious dinner. Take advantage of the long days of Antarctica's summer recapping memorable moments with shipmates, soaking in the vessel's hot tubs, or swimming in the infinity pool.

*Overnight: Ocean Victory (B,L,D daily)*

### **Days 10-11: Drake Passage**

Saturday, January 22, 2022 - Sunday, January 23, 2022

The journey returns north-bound back through the Drake Passage. Join your travel

companions indoors to enjoy educational presentations and lectures, lively accounts of expedition experiences or the ship's recreational facilities. Take advantage of the last days at sea to capture the panoramic beauty of the Southern Ocean from the *Ocean Victory's* outdoor viewing areas.

During the final evening on board, enjoy a special farewell cocktail, featuring the ship and crew's End of Voyage ceremonies. Celebrate with a toast to commemorate the accomplishment of touring this last remote frontier both responsibly and with style.

*Overnight: Ocean Victory (B,L,D daily)*

## **Day 12: Ushuaia – Disembarkation / Depart for U.S.**

Monday, January 24, 2022

After breakfast, guests departing during the suggested times take the complimentary transfer to the airport for flights home. (B)

*NOTE: Embracing the unexpected is part of the legacy—and excitement—of expedition travel. When traveling in extremely remote regions, your expedition team must allow the sea, the ice, and the weather to guide route and itinerary details. This itinerary is a tentative outline of what you'll experience on this voyage; be aware that no specific itinerary can be guaranteed. A measure of flexibility is something all of us must bring to a polar expedition.*

†Travel time from/to U.S. may take up to two days depending on flight schedules.

B = Breakfast, L = Lunch, D = Dinner

(Itinerary subject to change.)

---

## **Activity Level:**

### **Moderate**

This program offers a variety of activities, including shore excursions and small boat cruises. We expect that guests be sure footed on stairs and ramps, be able to walk or hike at least one mile on uneven and slippery terrain, and be comfortable managing landings on various terrain and boarding small vessels—both from shore and the deck of the *Ocean Victory*. Ship staff will assist guests during each landing. On board, guests should be able to manage unexpected and unpredictable motion from the movement of the ship.



This expedition is therefore intended for persons in reasonably good health. Passengers who are not fit for long trips for any reason, including disability, heart or other health conditions, are advised not to join the tour, as it would entail an unreasonable risk to your enjoyment, health and safety of you and others on the expedition. All guests are required to sign a medical information sheet before boarding, to inform the medical personnel on board about any illnesses, allergies or conditions to be kept in mind during the voyage.

Due to the remote location of this tour, medical evacuation insurance is required with a minimum coverage of \$200,000. It usually costs between \$45 and \$125 per guest depending upon age and state the guest lives in. Orbridge's Guest Services team can assist with any questions regarding evacuation insurance.



#### **Early Reservation Bonus<sup>†</sup>**

Reserve your space early and receive a valuable collection of items such as maps, videos, books and field guides for your journey, selected by Orbridge's discriminating experts in the field, absolutely free.

## What's Included:

- 1 night luxury hotel accommodations (including breakfast) in Ushuaia prior to embarkation
- 9 nights aboard *Ocean Victory*, including all onboard meals
- 24-hour self-service coffee and tea facilities onboard
- All scheduled landings and excursions listed in the itinerary (all subject to weather and ice conditions)
- An insulated, waterproof, and windproof expedition parka, which is yours to keep
- A pair of insulated rubber boots for shore landings for duration of the cruise (to be returned prior to disembarkation)
- Access to a photographic trip log (shared with guests after the voyage via an online link)
- All ship-board gratuities
- All luggage portorage

- All port fees
  - Transfers from the hotel to the ship on embarkation day
  - Airport transfers for guests arriving and departing during the suggested times
-

## Your Guide(s):

### Kent Taylor — Antarctica Expedition Leader



Kent Taylor has led national park tours as a park ranger since 1984. Having worked with the National Park Service, U.S. Forest Service, U.S. Fish and Wildlife Service, Bureau of Land Management, and the Colorado Division of Wildlife, he brings to your expedition a lifetime of knowledge about parks, preserves, and wildlife.

Consistently the recipient of high praise, Kent is a favorite Expedition Leader among Orbridge guests. Kent traveled to Antarctica last season on board the *Ocean Adventurer* and is delighted to be selected to help lead this amazing journey in addition to expedition experts from the ship.

---

## Program Accommodations:

### Arakur Ushuaia Resort & Spa



January 14

On the first evening before embarkation, you will stay at the elegant and state-of-the-art Arakur Ushuaia Resort & Spa, perched atop an outcrop high above Ushuaia inside the Reserva Natural Cerro Alarkén. The property boasts a design that fulfills the standards of sustainable architecture. Each room features indigenous Argentine materials, including copper, marble, stone, woods, and leather.

During free time, explore the grounds or take a short trip on a complimentary shuttle into the city for sightseeing, souvenir shopping, or dining.

*Room Amenities: Individual climate control, LED TV, complimentary Wi-Fi, phone, safe, bathrobes and slippers, and en suite bathroom with sundries and hair dryer.*

### Ocean Victory



January 15 - January 23

Accommodating 190 guests, *Ocean Victory* adeptly blends aesthetics, utility, and environmental responsibility to ensure comfort, adventure, and sustainability in Antarctica.

*Ocean Victory* boasts the highest Polar code 6 and Ice class 1A designations, making it an ideal vessel for small-ship expedition cruising. Sturdy construction and a patented X-Bow design create excellent maneuverability and enjoyable travel by reducing seasickness, noise, and vibration.

All cabins are well-appointed and feature exceptional space, amenities, and ocean views. Suite categories include exclusive complimentary amenities, including laundry service and a well-stocked mini bar.

Public areas provide a convivial atmosphere for socializing and relaxation. Admire the surrounding scenery and spot for whales from two observation lounges, the outdoor bar, or while soaking in one of two hot tubs. Seize an opportunity to dine on deck eight in the specialty restaurant offering lava stone cooking. This unique and healthy food experience dates from the times of Vikings and makes for a dynamic and satisfying pairing with beverage selections from French wine tasting menus and organic coffees and teas.

Visit the polar library and curl up with tales of intrepid Antarctic explorers. Browse the onboard boutique gift shop for souvenirs, gain educational enrichment via discussions in the lecture room, and practice self-care with fitness and wellness options including an infinity pool, gym, and spa facilities.

Built with an environmental focus, this vessel implements a green initiative program using only sustainable seafood, biodegradable laundry products, and removing single-use plastics. Special engine controls optimize speed and fuel consumption.

**Cabin Categories:** Each cabin offers exterior ocean views, individual climate control, closets, TV, writing desk and chair, and private en suite bathroom with bathrobes, shampoo, shower gel, and hair dryer. Each cabin can be configured as two twin beds or one king bed.

**Albatros State Porthole Cabin** (Cat. D): Porthole window (located on Decks 3 and 4—approx. 236 sq.ft.)

**French Balcony Suite** (Cat. E): Floor-to-ceiling windows (located on Deck 7—approx. 172 sq.ft.)

**Balcony State Cabin** (Cat. C): Private balcony with floor-to-ceiling windows (located on Decks 4 and 6—approx. 258 sq.ft.)

**Balcony Suite** (Cat. B1): Sitting area and private balcony with floor-to-ceiling windows (located on Deck 4—approx. 376 sq.ft.)

**Balcony Suite/Triple/Family** (Cat. B2): Sitting area and private balcony with floor-to-ceiling windows (located on Decks 4 and 6—approx. 301 sq.ft.)

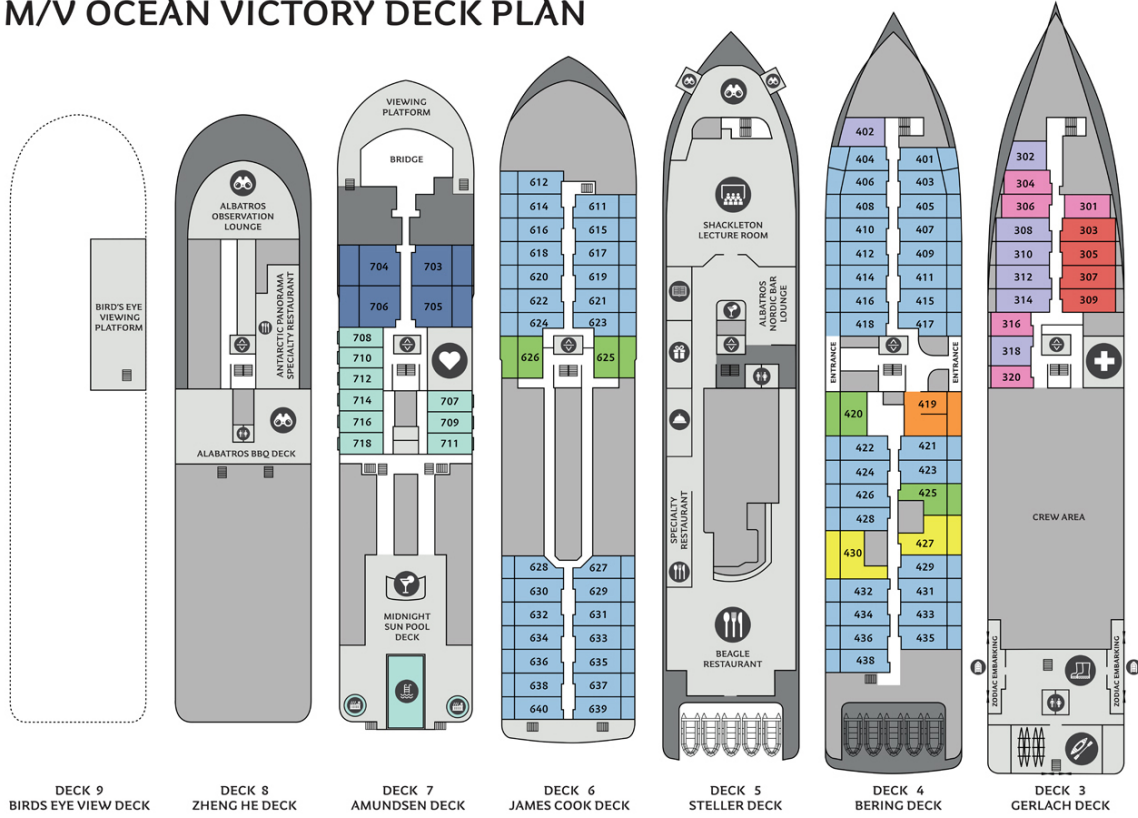
**Junior Suite** (Cat. A): Additional sofa bed, sitting area, and private balcony with floor-to-ceiling windows (located on Deck 7—approx. 452 sq.ft.)

**Premium Suite** (Cat. PS): Two-bedroom suite, additional sofa bed, table and chairs, and private balcony with floor-to-ceiling windows (located on Deck 4—approx. 484 sq.ft.)

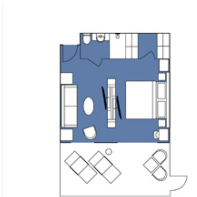
**Single Porthole** (Cat. G): Porthole window (located on Deck 3—approx. 193 sq.ft.)

**Triple Porthole** (Cat. F): Additional sofa bed with a porthole window (located on Deck 3—approx. 226 sq.ft.)

# M/V OCEAN VICTORY DECK PLAN



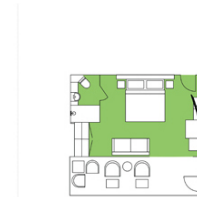
**CATEGORY PS**  
Premium Suite (1)  
484 sq ft, incl. Balcony



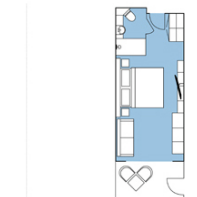
**CATEGORY A**  
Junior Suite (4)  
452 sq ft, incl. Balcony



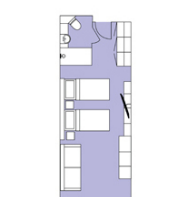
**CATEGORY B1**  
Balcony Suite (2)  
376 sq ft, incl. Balcony



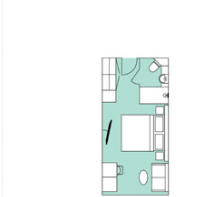
**CATEGORY B2**  
Balcony Suite (4)  
301 sq ft, incl. Balcony



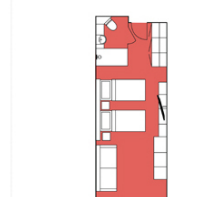
**CATEGORY C**  
Balcony State Cabin (57)  
258 sq ft, incl. Balcony



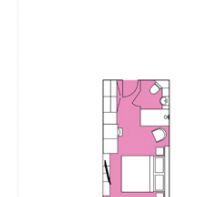
**CATEGORY D**  
Albatros Stateroom (7)  
236 sq ft, Porthole



**CATEGORY E**  
French Balcony Suite (9)  
172 sq ft, French Balcony



**CATEGORY F**  
Triple Stateroom (4)  
236 sq ft, Porthole



**CATEGORY G**  
Single Stateroom (5)  
193 sq ft, Porthole

**SPECIFICATIONS**  
Year Built: 2021  
Crew: 100 (57 cabins)  
Pax Capacity: 189 (93 cabins)  
Length: 104,4 m  
Breathth: 18,4 m  
Draft: 5,1 m

## FACILITIES

- Restaurant
- Knud Rasmussen Library
- Fitness
- Mudroom
- Elevator
- Bar
- Albatros Ocean Boutique
- Albatros Polar Spa
- Zodiac embarking
- Stairs
- Observation Area
- Reception
- Infinity Pool
- Kayak platform
- Shackleton Lecture Room
- Medical Clinic
- Jacuzzi
- Toilet

## Highlights

- Welcoming open bridge, providing access to the captain and officers, as well as a special panoramic view of the outdoor landscape
- All cabins have exterior ocean views, most featuring private balconies
- Full-service restaurant with open seating, featuring contemporary, international cuisine prepared by talented chefs
- Interactive dining experience available demonstrating the ancient and healthy lava rock cooking method
- Stylish observation lounge with complimentary 24-hour self-service coffee and tea facilities, and staffed bar serving alcoholic and non-alcoholic beverages (additional fee)
- Fully-equipped, modern lecture lounge for briefings by an expert Expedition Leader and the ship's naturalist guides
- Cozy library with an extensive selection of books
- Fitness area
- In-house spa, featuring unique polar treatments by appointment (additional fee)
- Infinity swimming pool and two hot tubs

(Accommodations subject to change.)

---

## What Guests Are Saying:

"We felt that Orbridge went above and beyond our expectations. I was impressed with the concern of the staff for our safety at all times. I was also impressed that everyone seemed so interested and concerned that we have the best experience possible in all ways. The lectures were a wonderful addition--it allowed for meeting other people, as well as educating us on the continent, wildlife, and many other aspects of Antarctica.

Thanks again for a wonderful trip of a lifetime. This has been my favorite, most beautiful, and enjoyable trip so far!"

–Sarah & Frank L., Norwood, NC

"We were totally awed by the quality of the Orbridge staff and the logistical excellence of the arrangements.

The expedition staff, as well as the guest lecturers, were wonderful additions to our experience. Every lecture provided a great enhancement of our overall experience. And the professionalism of the expedition team was superb. They knew their jobs perfectly, with an emphasis on safety. And their naturalist knowledge was also very impressive. They clearly loved sharing their info with the group, both formally and informally."

–Barbara W., Oak Park, IL

"One of our best trips ever. The tour operators made the trip most enjoyable and the weather and wildlife cooperated giving us a tremendous experience."

–John L., Lincoln, NE

"The trip to the Antarctic was the most amazing and spiritual trip I have ever been on. And I have been traveling internationally since I was 16 years old—so that makes it 60 years of traveling internationally. I plan to go back and I hope to be with you all again in 2019."

–Barbara K., Houston, TX

"A unique experience, excellent organization and program. The speakers were knowledgeable and excited about Antarctica. We learned a lot. The visits were



totally safe and perfectly timed.”

–Dimitrios K. & Sylvie J., New York, NY

Optional Pre-Tour:

# BUENOS AIRES



Experience summer in Argentina as you explore its sophisticated capital city, Buenos Aires—where rich historic sites, charming shops and restaurants, and welcoming locals create a splendid combination of old and new.

---

## Itinerary:

### **Day +1: En Route from U.S.†**

Tuesday, January 11, 2022

### **Day +2: Arrive in Buenos Aires, Argentina**

Wednesday, January 12, 2022

Welcome to Argentina! Take some time to refresh at the hotel before meeting fellow travelers and heading to one of Buenos Aires' most iconic theaters for a spectacular performance of Argentina's passionate and entertaining art form--the tango. First, dine on a sumptuous three-course dinner in opulent surroundings while the artists prepare for the evening's show. Then, be amazed by the intensity and precision on display by the dancers, singers, and live orchestra through an exquisitely choreographed presentation of Argentina's most celebrated dance.

*Overnight: Alvear Palace Hotel (D)*

### **Day +3: Buenos Aires**

Thursday, January 13, 2022

Set out on a panoramic tour to discover some of the city's most beautiful, historical, and important locations. Travel through the lush parks of the Palermo area before continuing to Recoleta —Buenos Aires' most glamorous neighborhood—stopping at Recoleta Cemetery. More than 6,400 statues, mausoleums, sarcophagi, coffins, and crypts commemorate many of Argentina's most celebrated sons and daughters, including Eva Perón.

En route to the Plaza de Mayo, pass by 9th of July Avenue, known as the world's widest boulevard. Then stop for photos at the Colón Theatre, one of the world's best-known opera houses.

Visit Café Tortoni to sample a traditional ham and cheese snack called the *porteño*. Afterward, return to the Plaza de Mayo to see the Casa Rosada (Government House), the Metropolitan Cathedral, and the Cabildo—a present-day museum that used to serve as a government building during colonial times.

The remainder of the afternoon and evening are yours to relax or enjoy the various amenities at the hotel.

*Overnight: Alvear Palace Hotel (B,Snack)*

#### **Day +4: Buenos Aires / Flight to Ushuaia / Main Program Begins**

Friday, January 14, 2022

After breakfast, take the complimentary group transfer to Aeroparque Jorge Newbery for a flight to Ushuaia to join the group for the main program. (B)

†Travel time from/to U.S. may take up to two days depending on flight schedules.

B = Breakfast, D = Dinner

**NOTE: The internal flight from Buenos Aires to Ushuaia is not included in the pre-tour price.**

*This pre-tour is not escorted by an Orbridge Expedition Leader, however the Alvear Palace Hotel concierge service is available for assistance with activity planning. Included sightseeing is accompanied by a local guide. Space is limited, so it's recommended to reserve early for best availability.*

(Itinerary subject to change.)

---

## Activity Level:

### **Moderate**

Activities are generally not very strenuous, however, we expect that guests can enjoy two hours or more of walking, are sure-footed on cobbled surfaces, and can walk up and down stairs without assistance.

---

## Accommodations:

### Alvear Palace Hotel



January 12 - January 13

Embrace the sophisticated elegance of this luxury five-star hotel, located in one of Buenos Aires' most regal neighborhoods. Winner of numerous "Best" awards from *Traveler* and *Travel+Leisure*, Alvear Palace Hotel provides exceptional service with a focus on social commitment—including environmental policies, volunteerism, and resource preservation.

The property hosts three restaurants and two bars, including a rooftop bar overlooking bustling Alvear Avenue.

During free time, take advantage of the wellness area, featuring steam baths, saunas, a pool, and relaxation rooms.

*Room Amenities: Individual climate control, Egyptian cotton bedding, writing desk, LCD TV, complimentary Wi-Fi, phone, safe, and en suite bathroom with premium sundries and hair dryer.*

(Accommodations subject to change.)

---

## What's Included:

- 2 nights accommodations at the 5-star Alvear Palace Hotel (or similar) with breakfast each morning
- Special 3-course dinner and tango performance
- Panoramic city tour of Buenos Aires
- All gratuities and portorage
- All airport and hotel transfers for guests arriving and departing during the suggested times

Optional Post-Tour:

# IGUAZÚ FALLS



Hold on to your hat while you experience the thundering roar and huge clouds of spray from one of the most spectacular waterfalls in the world. Spanning over two miles, Iguazú Falls is four times the width of Niagara Falls and includes 275 separate falls.

---

## Itinerary:

### **Day 12: Flight to Buenos Aires**

Monday, January 24, 2022

Arrive at Aeroparque Jorge Newbery, and take the group transfer to the hotel for a relaxing and restful evening.

*Overnight: Alvear Icon Hotel*

### **Day 13: Flight to Iguazú Falls / Guided Tour**

Tuesday, January 25, 2022

After an early breakfast, take the group transfer to Aeroparque Jorge Newbery for the included two-hour flight to Cataratas del Iguazú International Airport.

Upon arrival, embark on a guided tour of the Argentinian side of Iguazú Falls. Hear the thunder of the crashing waters of the largest waterfall system in the world, and feel the vapor kiss your skin. Choose from three different paths (depending on desired activity level): the lower path, the higher path, and the "Devil's Throat." Listen as the local guide

enlightens you about the geology, flora, fauna, and local history of this amazing natural wonder.

*Overnight: Gran Meliá Iguazú (B,L)*

### **Day 14: Iguazú Falls Tour**

Wednesday, January 26, 2022

This morning, enjoy a second guided visit to the falls. This afternoon, choose to join the optional excursion or enjoy free time on your own.

*Optional Excursion: Gran Aventura Safari Boat Tour (\$75—cash only; payable to your guide)*

Embark in open trucks that provide unobstructed views of the scenery along the trail and observe the various flora and fauna of the jungle. Then climb aboard secure and efficient inflatable bi-motor boats to cruise up the river through the canyon. At Devil's Throat, the captain will navigate through the falls for a quick and refreshing shower.

*Overnight: Gran Meliá Iguazú (B)*

### **Day 15: Iguazú Falls / Flight to Buenos Aires / Depart for U.S.**

Thursday, January 27, 2022

After breakfast, take the complimentary group transfer to Cataratas del Iguazú International Airport for the flight to Buenos Aires' Aeroparque Jorge Newbery, where you'll connect for flights home. (B)

B = Breakfast, L = Lunch

*This post-tour is not escorted by an Orbridge Expedition Leader. Included sightseeing is accompanied by a local guide. Space is limited, so it's recommended to reserve early for best availability.*

**NOTE: The internal flight from Ushuaia to Buenos Aires is not included in the post-tour price. The internal round-trip flight between Buenos Aires and Iguazú Falls is included in the post-tour price.**

(Itinerary subject to change.)

---

## **Activity Level:**

**Moderate**

Guests should be sure-footed on stairs and able to walk at least one mile on rocky and

uneven ground, as some nature hikes will be on irregular and steep terrain.

---



## Accommodations:

### Alvear Icon Hotel



January 24

Overlooking the Río de la Plata River in Puerto Madero, this five-star property exudes an atmosphere of innovative and stylish comfort. Choose from a variety of gourmet restaurants on site, as well as inviting social spaces and bars.

The hotel also offers a modern fitness room, pool, sauna, and steam bath.

*Room Amenities: Individual climate control, Egyptian cotton bedding, TV, phone, Wi-Fi (additional fee), safe, and en suite bathroom with premium sundries and hair dryer.*

### Gran Meliá Iguazú



January 25 - January 26

Located within Iguazú National Park, this modern hotel features comfortable rooms with views of the falls or the jungle. The stunning landscape provides the ideal backdrop for various outdoor activities, including swimming, tennis, hikes, and exploration.

*Room Amenities: Individual climate control, flat-screen TV, minibar, safe, iron and ironing board, and en suite bathroom with sundries and hair dryer.*

(Accommodations subject to change.)

---

## What's Included:

- 1 night accommodations at Alvear Icon Hotel in Buenos Aires and 2 nights at Gran Meliá Iguazú (or similar) with breakfast each morning
- 1 box lunch
- 2 guided tours of Iguazú Falls
- All gratuities and portorage
- All airport and hotel transfers
- Internal round-trip airfare between Buenos Aires and Iguazú Falls

## Antarctica Discovery

JANUARY 13, 2022 — JANUARY 24, 2022

PRE-TOUR: JANUARY 11, 2022 — JANUARY 14, 2022

POST-TOUR: JANUARY 24, 2022 — JANUARY 27, 2022

### EARLY RESERVATION BONUS†

RESERVE BY **APRIL 23, 2021** TO RECEIVE A

FREE ORBRIDGE EXPEDITION LIBRARY

#### PROGRAM RATES\*

D — Albatros State Porthole: \$9,995

E — French Balcony Suite: \$11,995

C — Balcony State: \$13,495

B2 — Junior Balcony Suite: \$14,995

B1 — Balcony Suite: \$16,995

A — Junior Suite: \$17,995

PS — Premium Suite: \$19,995

G — Single: \$15,995

F — Triple Porthole: \$9,495

#### PRE-TOUR RATE\*\*

Double: \$1,495

Single: \$1,995

#### POST-TOUR RATE\*\*\*

Double: \$2,295

Single: \$3,795

### Reserve by Credit Card:

Online: [uillinois.orbridge.com](http://uillinois.orbridge.com)

Phone: (866) 639-0079

Fax: (206) 452-5655

### Reserve by Check:

Made payable to **Orbridge, LLC**

Mail to: Orbridge, P.O. Box 10339

Bainbridge Island, WA 98110

The EXPLORERS program is open to alumni of the University of Illinois, their families, and friends.

### GUEST INFORMATION:

Guest #1 Name (Title/Salutation): \_\_\_\_\_

Email: \_\_\_\_\_ Class Year: \_\_\_\_\_

Home Phone: \_\_\_\_\_ Alt. Phone: \_\_\_\_\_

Address: \_\_\_\_\_

City: \_\_\_\_\_ State: \_\_\_\_\_ Zip: \_\_\_\_\_

Guest #2 Name (Title/Salutation): \_\_\_\_\_

Email: \_\_\_\_\_ Class Year: \_\_\_\_\_

Home Phone: \_\_\_\_\_ Alt. Phone: \_\_\_\_\_

### DEPOSIT PAYMENT:

Check    ACH (Automated Clearing House)    MasterCard/Visa    American Express    Discover

Card #: \_\_\_\_\_ Exp. Date: \_\_\_\_\_ CVV: \_\_\_\_\_

Name (as printed on card): \_\_\_\_\_

Billing Address (if different from above): \_\_\_\_\_

City: \_\_\_\_\_ State: \_\_\_\_\_ Zip: \_\_\_\_\_

## CATEGORY SELECTION & DEPOSIT:

Category Preference: 1st choice \_\_\_\_\_ 2nd choice \_\_\_\_\_

# \_\_\_\_\_ guests joining pre-tour (\$500/person) +

# \_\_\_\_\_ guests joining program (\$2,500/person) +

# \_\_\_\_\_ guests joining post-tour (\$500/person) = **TOTAL DEPOSIT: \$** \_\_\_\_\_

**ANTARCTICA OPTIONAL EXCURSION** (added to your final invoice)—**book early; limited space available:**

# \_\_\_\_\_ guests joining Sea Kayaking—one-time outing—(\$250/person)

I/we have read, understand, and agree to the full Terms & Conditions at [terms.orbridge.com](http://terms.orbridge.com) and the COVID-19 Acknowledgement at [orbridge.com/wellness](http://orbridge.com/wellness); and I/we agree that Orbridge, LLC is authorized to charge my credit card above and/or take my/our deposit for this program.

Signature: \_\_\_\_\_ Date: \_\_\_\_\_

*\*Special group rate; limited offer. Rates are per person based on double occupancy except where noted as Single, in U.S. dollars. Single and Triple availability limited. Airfare not included.*

*\*\*Pre-tour rate is per person based on double occupancy except where noted as Single, in U.S. dollars. Single availability limited. Airfare, including flights from Buenos Aires to Ushuaia, is not included.*

*\*\*\*Post-tour rate is per person based on double occupancy, in U.S. dollars. Internal round-trip airfare between Buenos Aires and Iguazú Falls is included. General airfare, and the airfare for the internal flight from Ushuaia to Buenos Aires, is not included.*

*†Place your deposit on or before the specified date (see above), and one Expedition Library per room reserved will be sent after receipt of final payment.*

# Terms and Conditions

**THE FOLLOWING TERMS AND CONDITIONS ARE EFFECTIVE JANUARY 1, 2021,  
AND APPLY TO NEW RESERVATIONS RECEIVED BY ORBRIDGE ON OR AFTER JANUARY 1, 2021.**

**Note: Travel credits and transfers are subject to the Terms and Conditions agreed upon at the time of the original reservation.**

## ORBRIDGE® TERMS AND CONDITIONS, RELEASE AND BINDING ARBITRATION AGREEMENT

This Agreement includes contractual terms and conditions and releases Orbridge, LLC from liability. Any payment to Orbridge, including but not limited to deposits or full payments, constitutes your acknowledgement of, and agreement to, this Terms and Conditions, Release and Binding Arbitration Agreement Orbridge set forth below and in subsequent tour documents.

**Limitation of Responsibility.** Orbridge LLC, its shareholders, directors, officers, employees and affiliates (collectively, "Orbridge"), does not own or operate any entity that provides goods or services for your trip including, for example, ownership or control over hotels or other lodging facilities, airline, vessel, bus, van or other transportation companies, local ground operators, providers or organizers of optional excursions or equipment used thereon, food service or entertainment providers, etc., even if they use the "Orbridge LLC" or "Orbridge" name. All such persons and entities are independent contractors. As a result, Orbridge is not liable for any negligent or willful act or failure to act of any such person or entity, or of any other third party. Without limitation, Orbridge is not responsible for any injury, loss, or damage to person or property, death, delay or inconvenience (collectively, "losses") in connection with the provision of any goods or services occasioned by or resulting from, but not limited to, acts of God, acts of government, force majeure, acts of war or civil unrest, insurrection or revolt, strikes or other labor activities, criminal or terrorist activities of any kind, or the threat thereof, overbooking or downgrading of accommodations, structural or other defective conditions in hotels or other lodging or vessel facilities, mechanical or other failure of airplanes or other means of transportation or for any failure of any transportation mechanism to arrive or depart timely or safely, dangers associated with or bites from animals, pests or insects, marine life or vegetation of any sort, dangers incident to recreational activities such as scuba diving, snorkeling, paddle boarding, surfing, swimming, kayaking, sailing, canoeing, rafting, hiking, bicycling, rock climbing, etc., sanitation problems, food poisoning, lack of access to or quality of medical care, difficulty in evacuation in case of a medical or other emergency, illness, epidemics, pandemics or the threat thereof or for any other cause beyond the direct control of Orbridge. In addition, I release Orbridge from its own negligence and assume all risk thereof.

**Rates.** Program rates are based on minimum participation levels, current fares and costs (air, water, land, rail), tariffs and currency values. While Orbridge does everything possible to maintain the listed program rates, they are subject to change effective immediately upon posting unless otherwise specified by Orbridge. In the case of invoicing errors, we reserve the right to re-invoice with the correct pricing.

**Reservations, Deposits and Final Payment.** To secure your reservation, deposits are due upon placing a reservation as follows: (1) \$850 per person per program and \$500 per person per pre-tour and/or post-tour except for programs noted in (2) and (3); (2) \$2,500 per person for Antarctica Discovery and Trans-Siberian Railway and \$500 per person per pre-tour and/or post-tour; (3) a non-refundable \$1,500 per person is due for Tanzania Wildlife Safari's Rwanda pre-tour. Deposits are payable by check, automated clearing house ("ACH"), wire transfer or major credit card.

Final payment, including any pre-tour and/or post-tour, optional excursion(s) fees and optional electives, is payable by check, ACH or wire transfer, and is due for: (1) all programs except Antarctica Discovery and Trans-Siberian Railway—no later than 90 days prior to the program's scheduled departure date; (2) Antarctica Discovery and Trans-Siberian Railway—no later than 150 days prior to the program's scheduled departure date.

If your reservation is made between the final payment due date and the program's scheduled departure date, the full cost of the program, plus any pre-tour and/or post-tour, optional excursion(s) fees and optional electives, is due at the time of registration, payable by check, ACH or wire transfer.

Final payments made by credit card for departures in 2021 are subject to a 2% transaction fee.

If final payment is not received by Orbridge by the final payment due date, Orbridge may, at any time and with or without notice, cancel your reservation in its sole discretion with no right of refund.

**Reservation Cancellations and Refunds.** All cancellations must be submitted to Orbridge in writing and will be processed as follows:

(a) For all programs except those noted in (b) and (c), if the cancellation notice is received by Orbridge more than 90 calendar days prior to the program's scheduled departure date, all monies paid to Orbridge for the main program and for any pre-tour and/or post-tour will be refunded in full. If the cancellation notice is received by Orbridge between 90 and 60 days prior to the scheduled departure date, a 25% cancellation fee will be applied to the full cost of the program, including any pre-tour and/or post-tour, and the balance will be refunded. If the cancellation notice is received by Orbridge between 59 and 30 days prior to the scheduled departure date, a 50% cancellation fee will be applied to the full cost of the program, including any pre-tour and/or post-tour, and the balance will be refunded. If the cancellation notice is received by Orbridge within 29 days prior to the scheduled departure date, a 100% cancellation fee will be applied to the full cost of the program, including any pre-tour and/or post-tour.

(b) For Antarctica Discovery and Trans-Siberian Railway, if the cancellation notice is received by Orbridge more than 180 calendar days prior to the scheduled departure date, all monies paid to Orbridge for the main program and for any pre-tour and/or post-tour will be refunded in full. If the cancellation notice is received by Orbridge between 180 and 150 days prior to the scheduled departure date, a 25% cancellation fee will be applied to the full cost of the program, including any pre-tour and/or post-tour, and the balance will be refunded. If the cancellation notice is received by Orbridge between 149 and 120 days prior to the scheduled departure date, a 50% cancellation fee will be applied to the full cost of the program, including any pre-tour and/or post-tour, and the balance will be refunded. If the cancellation notice is received by Orbridge within 119 days prior to the scheduled departure date, a 100% cancellation fee will be applied to the full cost of the program, including any pre-tour and/or post-tour.

(c) All payments made for Tanzania Wildlife Safari's Rwanda pre-tour are non-refundable at all times.

In addition to and not in lieu of the foregoing, a Cancellation Fee equal to 100% of the carrier charge applies to all non-refundable airfares due to your cancellation made at any time prior to the scheduled program departure date, as applicable. Refunds, if any, will be processed within 30 calendar days of our receipt of your written notice.

**Travel Insurance.** Orbridge strongly recommends that you purchase travel and cancellation insurance to protect your investment in the event of unexpected or unforeseen circumstances. In addition, we recommend that you consider obtaining a policy(ies) that will cover emergency medical evacuation insurance and cancel for any reason insurance. Travel and cancellation insurance policies and dates by which policies must be purchased vary by provider/insurer, maximum coverage (including cancel for any reason) is generally only available for purchase within 14 days of your reservation being confirmed. It is advised to determine your insurance needs and make necessary arrangements soon after reserving on tour. If you do not have, but are interested in purchasing, travel and cancellation insurance please contact us.

**Program Cancellations or Postponements.** All programs are subject to cancellation or postponement by Orbridge prior to the scheduled departure date for reasons such as, but not limited to, insufficient participation, or logistical problems that, in Orbridge's sole judgment, may impede program operations or represent conditions or events that may expose program guests and/or Orbridge to undue risk of harm, injury, damage or inconvenience. In the event of program cancellation or postponement by Orbridge, Orbridge may offer you alternative arrangements such as the option to join the same tour on a different date or a different tour. If the price of your alternative booking is lower than your original booking price, Orbridge will refund the difference within 30 days of the alternative program's departure date. If it is higher than your original booking price, Orbridge will invoice you the difference and you will be responsible therefor. Transferred guests are subject to the terms of the original tour. Except for force majeure, if a program is cancelled or postponed by Orbridge, Orbridge will refund all payments made within 30 calendar days of notice of program cancellation or postponement if an alternative arrangement is not offered.

**Itineraries.** Accommodations, the itinerary, travel directors or expedition leaders, lecturers, hosts, faculty or organization representative, and arranged excursions are subject to change or substitution at any time due to unforeseen circumstances or circumstances beyond Orbridge's control. Reasonable efforts will be made to operate programs as planned, however adjustments, substitutions and changes may occur after the final itinerary has been issued. Orbridge may, in its sole discretion, withdraw a program or any part of it, make such alterations or substitutions to the itinerary or program inclusions as it deems necessary or desirable, and pass on to program participants any expenditures or additional costs caused by any such adjustments, or by delays or events beyond its reasonable control.

**Not Included.** Unless otherwise specifically noted in the itinerary, program prices do not include the following expenses, which if applicable are your sole responsibility to pay and satisfy: trip cancellation insurance and passenger travel protection plan; domestic, international, and internal airfares except as indicated in program inclusions; transfers and luggage handling fees except in connection with scheduled group flights; costs associated with obtaining passports or entry visas; airport departure taxes; airline ticketing fees; airport transfers when arriving/departing on other than scheduled group dates; excess baggage charges; any new value added taxes or other taxes added to program costs by applicable governmental authorities; gratuities to drivers, guides, or ship's crew not specified; meals and beverages other than those specified as being included in the itinerary; sightseeing not included in the itinerary; personal expenses such as laundry, communication charges and optional activities (which are subject to availability); ship, air, or transportation fuel surcharges, if applicable; any items not on the "included" list of the tour documents

**Health and Fitness to Travel.** Through your participation in your tour, you assume responsibility for your own health, safety, and welfare and acknowledge that Orbridge cannot absolutely guarantee your safety or health. Your physician can provide guidance on your personal health risk and precautions to take while traveling. Some programs include physically active elements. To enjoy these programs as intended, a minimum level of fitness is required and Orbridge will require all guests to follow local, state, national and/or World Health Organization health and safety mandates. Accordingly, you must be in good physical and mental condition to participate. You represent that you have no physical, mental or other condition, impairment or disability that may or will cause or create a risk of injury or other hazard to yourself or others in respect to any aspect of the program you have selected. Orbridge may, in its sole discretion, limit, restrict or prohibit participation in any aspect of any program any individual that it considers in its sole discretion to be impaired or unsuitable due to fitness level. In addition, Orbridge may, in its sole discretion and at the participant's sole expense, remove the guest from the program, or restrict the program-related activities of any individual whose physical or mental condition may or is likely to cause a hazard to himself/herself or others, or otherwise impair the enjoyment of other program participants. Any physical condition requiring special attention, diet, or treatment must be reported in writing to Orbridge at the time a program reservation is made. Should you have any questions or need any clarification about a specific program, please ask for details at the time of registration. Orbridge will try to accommodate your situation if possible.

**Accessibility.** Orbridge cannot guarantee that the transportation, lodging, and entertainment/sightseeing accommodations will be accessible to all persons regardless of their physical and mental condition. In addition, many of the activities involved in each program include walking or the like for some distance on uneven ground or pavement or moving water as well as the ability to walk up and down stairs without assistance. Should any individuals seeking to participate in a travel opportunity need special accommodations to ensure their enjoyment of the trip, kindly provide notice at the time the reservation is submitted, and we will see if your participation is feasible. Please understand that the Americans with Disabilities Act is inapplicable outside the United States.

At the time of reservation, Orbridge needs to be notified to determine if the special needs of an individual traveler can be met through special arrangements. It is possible that minor modifications to the services can be provided, but only if Orbridge is made specifically aware of anticipated needs. This notification should be made in writing no less than two weeks prior to the planned travel. Neither Orbridge nor any of the providers of transportation, lodging, or other services can provide special accommodations without this advance notice.

Where an individual with certain specific needs will be traveling with a group, it is necessary for other members of that person's group to be available to assist as necessary.

Neither employees of Orbridge nor any suppliers of services can allow any of their employees to provide physical assistance to any guests.

**Travel Advisories.** The State Department and the Centers for Disease Control periodically issue statements and advisories about risks to travelers. These statements are country specific and contain important information. The State Department information can be found at [www.travel.state.gov](http://www.travel.state.gov), and the CDC statements can be found at <http://www.cdc.gov>. Orbridge highly recommends everyone to review these sites.

**Children.** Orbridge welcomes the participation of children in most of its programs. However, in the event you do include your children or other minors for whom you serve as legal guardian ("Dependents") in your travel plans, you hereby agree that you are and shall be at all times solely responsible for their care, actions, safety and protection during the program and any pre-tour and/or post-tour. Should you have any questions whether a particular program or inclusion is possible or suitable for your Dependent(s), please contact us.

**Baggage.** Program rates include the price of one piece of policy-compliant baggage per person during the land, cruise or rail portion of the program only unless specified in the itinerary. Air carriers and motor coaches often impose significant other restrictions or limitations on the number of pieces, size and weight of luggage and may reject or impose additional fees on luggage exceeding such limitations or restrictions. All such fees are your sole cost and responsibility. In addition and regardless of location or transportation method, your baggage and personal effects are and shall at all times be at your sole risk throughout the entire program. Please check with your air carrier for other applicable baggage restrictions and limitations.

**Travel Documents.** All guests are responsible for possessing and maintaining necessary travel documents. These documents shall be valid under state and federal law and as required by foreign countries being visited. Orbridge is not responsible for invalid travel documents and repercussions thereof.

For U.S. citizens, valid passports are required for travel to foreign destinations and some countries require specific visas prior to entry. Please direct any questions in respect to visa requirements to Orbridge, which shall use commercially reasonable efforts to provide answers as a courtesy, provided that it shall remain your sole responsibility and obligation to obtain and verify that you have all required travel documents, including visas, necessary and appropriate for the program location(s) and sufficient blank pages in your passport for visas and immigration stamps. In addition, some countries require your passport to have an expiry date of not less than six months after your anticipated return to the United States. Orbridge disclaims all liability for any expenses or costs you may incur due to your prohibition or restriction from entering a country on the program itinerary or reentering the United States at the conclusion of the program. If travel documents fail to meet these requirements, boarding of aircraft or ship to any international destination may be denied and entry into such countries may be denied.

**Photos and Videos.** Orbridge may take photographs and/or video of its trips and participant grants Orbridge permission to do so and for it to use such for promotional or commercial use without payment of any compensation to participant. In addition, Orbridge may use, without compensation, any photographs or video taken by tour participants and submitted to Orbridge or to SmugMug without payment of any compensation. In submitting any such photographs or videos to Orbridge or SmugMug, participant warrants that he or she took the image and that the dissemination of same does not violate the copyright rights of any person.

**Data Rights, Permissions.** Data collected and/or derived by Orbridge resulting from your use of the Website is the sole and exclusive property of Orbridge and may be used in any manner consistent with its Privacy Policy located on Orbridge's website. By submitting to Orbridge a digital or hard copy form that includes your personal contact information, including without limitation, your email address and telephone number(s), you give Orbridge and any other entity identified on the form permission to use that information to contact you and as otherwise may be described on the form and/or in the Privacy Policy.

**Other.** Dates, program details and costs are based on tariffs, exchange rates and other information current at the time of printing, but are subject to change at any time. While we do not anticipate material revisions of the itinerary or its included features, we do reserve the right to substitute accommodations or modes of transportation and to make any changes in the itinerary Orbridge, in its sole discretion, deems necessary and in that case any additional expense or cost will be paid by the individual guest. Your baggage and personal effects are your sole responsibility at all times. It is prohibited by federal law and Orbridge policy to bring illegal drugs, firearms, or other contraband (including marijuana for medical or recreational purposes) on any program.

Orbridge may at any time and without notice modify these terms and conditions, and any modification so made will be effective for all reservations made from and after the posted Effective Date.

In the event any term in these terms and conditions is deemed unenforceable the unenforceable clause shall be interpreted to give effect to the parties' intentions to the greatest enforceable extent, and all other provisions hereof shall remain fully enforceable according to their terms.

**Binding Arbitration.** I agree that any dispute concerning, relating, or referring to this contract, the brochure, or any other literature concerning my trip, or the trip itself shall be resolved exclusively by binding arbitration in Seattle, Washington, either according to the then existing commercial rules of the American Arbitration Association or pursuant to the Comprehensive Arbitration Rules & Procedures of the Judicial Arbitration and Mediation Services, Inc. (JAMS). Such proceedings will be governed by substantive (but not procedural) Washington law. The arbitrator and not any federal, state, or local court or agency shall have exclusive authority to resolve any dispute relating to the interpretation, applicability, enforceability, conscionability, or formation of this contract, including but not limited to any claim that all or any part of this contract is void or voidable. By agreeing to these terms and conditions, both parties are waiving their right to a trial by jury. Any arbitration commenced against Orbridge must be on behalf of only the individual(s) to this Agreement and his or her immediate family members travelling with them, such as a spouse or child. Under no circumstances can participant be part of a class or other joint action.

**Acceptance of Contract.** ANY PAYMENT TO ORBRIDGE, INCLUDING BUT NOT LIMITED TO DEPOSITS OR FULL PAYMENTS, CONSTITUTES YOUR ACKNOWLEDGEMENT OF AND AGREEMENT TO THESE TERMS AND CONDITIONS SET FORTH ABOVE AND IN MORE SPECIFIC TOUR DOCUMENTS.

©2021 ORBRIDGE LLC. All rights reserved.

ORBRIDGE, ORBRIDGE DESTINATION SPECIALISTS, ORBRIDGE GROUP, and OBR are service marks of Orbridge LLC. The service marks and trademarks of any supplier appearing in these materials are owned by each respective company.

WAST# 602828994; CAST# 2098750-40

(v. 010121)